

Characterizing and Understanding the Differences Between GOES WF_ABBA and MODIS Fire Products



Jay P. Hoffman^{*1}, Elaine M. Prins¹, Christopher C. Schmidt¹, Steven A. Ackerman¹, and Jeffrey S. Reid²
 CIMSS/University of Wisconsin, Madison, Wisconsin¹ Naval Research Laboratory, Monterey, California²
 jay.hoffman@ssec.wisc.edu^{*}

SATELLITE SIMILARITIES AND DIFFERENCES

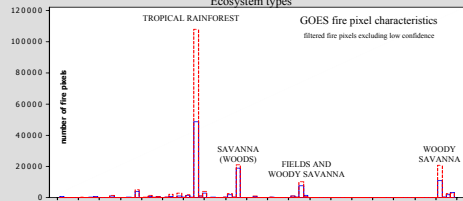
- Orbit**
 - Spatial coverage
 - Temporal coverage
 - Polar v Geostationary orbit
- Instrument design**
 - Saturation thresholds
 - Spectral sensitivity
 - Resolution
- Fire detection algorithm**
 - 4 μm temperature and 4 μm and 11 μm temperature difference thresholds
 - Dynamic contextual background calculations
 - Cloud, water, and land type masks
 - Surface emissivity, atmospheric attenuation, and solar reflectivity correction

CONCLUSIONS

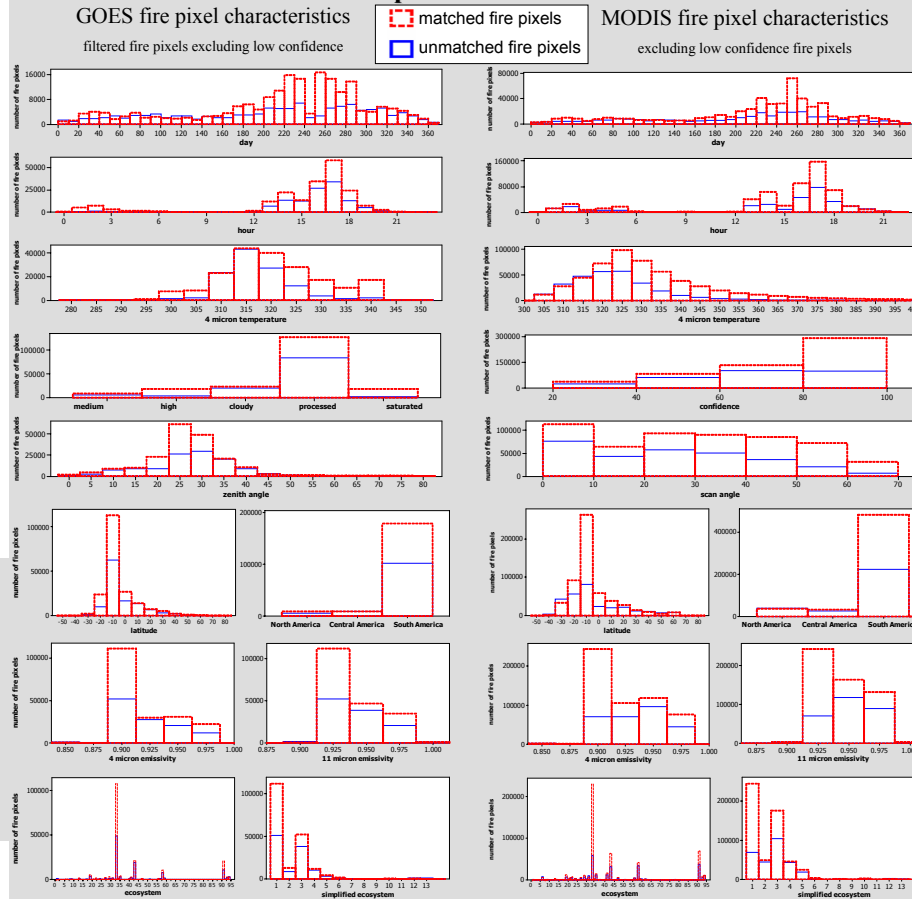
- Fire pixels with a match have different characteristics than fire pixels with no match
- Fire pixel characteristics can be used to forecast fire pixel matches
- Collocated fire pixels are not exactly collocated; spatial and temporal criteria is important

Different ecosystems are more likely to contain fire pixels with a match than other ecosystems

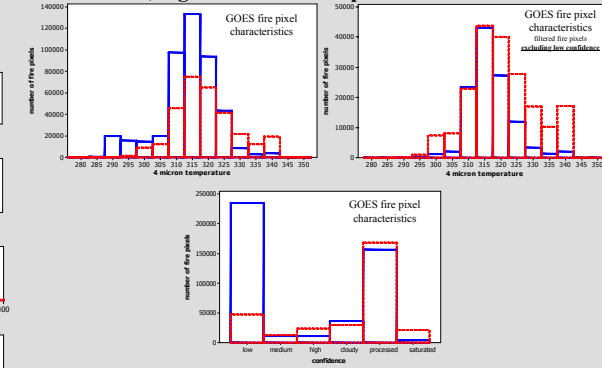
Ecosystem types



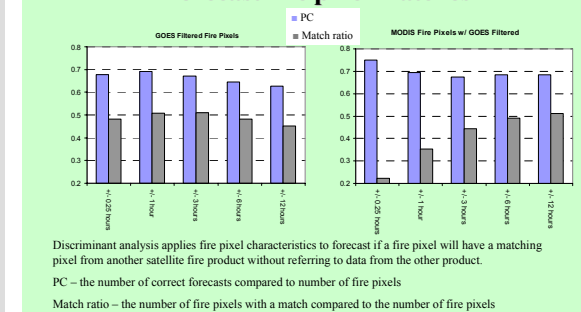
Fire pixels with a match have different characteristics than fire pixels with no match



Cool, low confidence fire pixels often go unmatched



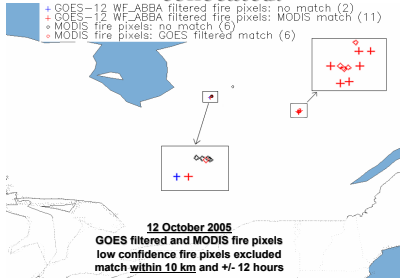
Fire pixel characteristics can be used to forecast fire pixel matches



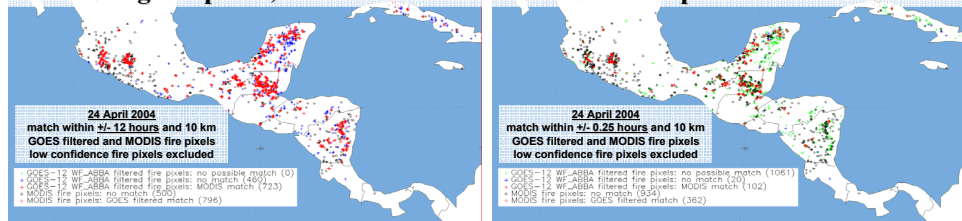
Data Products

- GOES WF_ABBA version 6.0 ASCII fire data along with the filtered product where temporal filtering helps to screen false detections.
- MODIS fire product, collection 4.

Collocated fire pixels are not exactly collocated.



Allowing more time to pass between fire detections increases the number of matching fire pixels, but the number of unmatched fire pixels increases faster



Excluding low confidence fire detections improves the match rate

